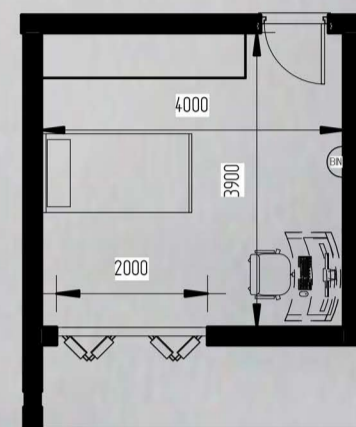


# DETAILS

SAFE ENTRY is top priority, people coming from zone A (outside environment) to Zone B (homes). for safe entry, A water tap against a perforated brick wall, to ensure easy drying of the place and the material of the tap to be copper due to its ability to kill bacteria

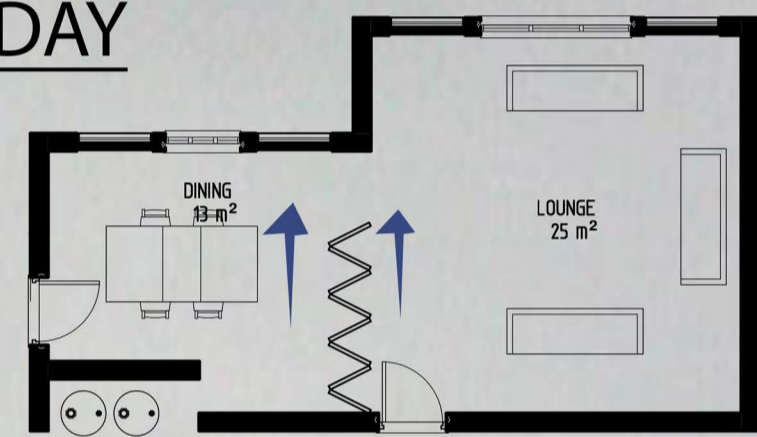
The roof system is composed of lean to roofs sloping inwards at angle of 12 degrees each, leading water to the middle roof which slopes at an angle of 2 degrees leading the water straight to the harvesting (Re-used oil) tanks. With an area of 62.631/81.901 SQmm The roof create a large envelope for solar light panels.

## SPACE TRANSFORMATION



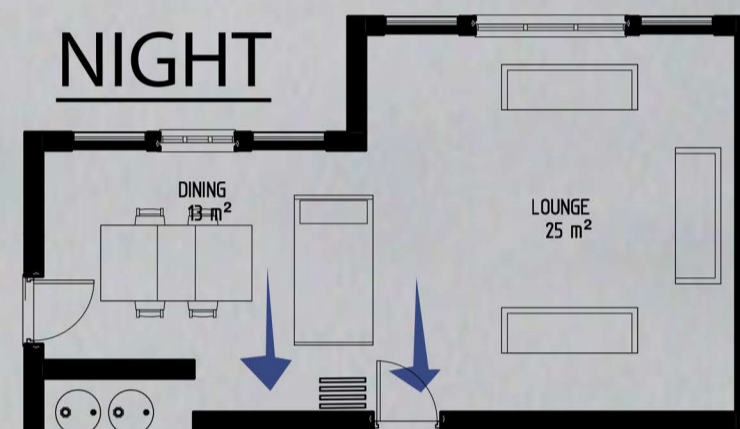
The child of the family happens to be a painter, so there was need to create an outdoor space that transitions nicely with the interior. large openings were used, to make the interiors one with the outdoor and at the khonde(veranda) there is an elevated perforated wall aswell as pergola. to make the place feel separated at the same creating a natural envelope that painters mostly need. the plants also help filter the that enters the indoor spaces.

### DAY

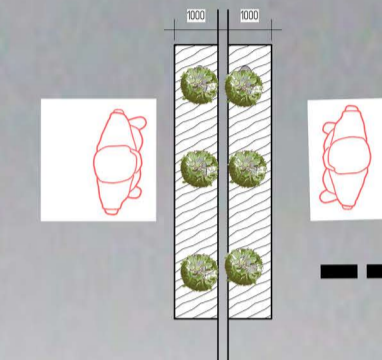


Foldable movable wall opened during day to demarcate dining and lounge

### NIGHT



Foldable wall retained to create space for extra sleeping space. This is to cover up incase of guests or a member of the house catching covid-19 Making an already existing room to become a quarantine zone



To accomodate social interaction the fence has wooden planks with maximum width of 1000mm. Creating space for potted plants. This supports the idea of maximising food production aswell necessitate interaction between neighbours, whilst keeping safe distance to prevent spread of covid-19

Grass for ground cover as opposed to pavement to allow penetration of run-off

Used Oil tanks for harvesting rain water (RE-USING)

Sanitation bins have been introduced in all major points of the house. The toilet, house entry point, the bedrooms and not forgetting the kitchen

As much time will be spent at the backyard, a more natural environment is important for healthy living. A garden has been proposed And at the centre we have a chill spot with its shape and form originating from a local rounded african hut. ....for continued supply of good harvest at the garden aswell pot plants AN ECO SAN pit latrine has been proposed. This stops the use of inorganic fertilizers which damage our eco-system.

### CHILLSPOT

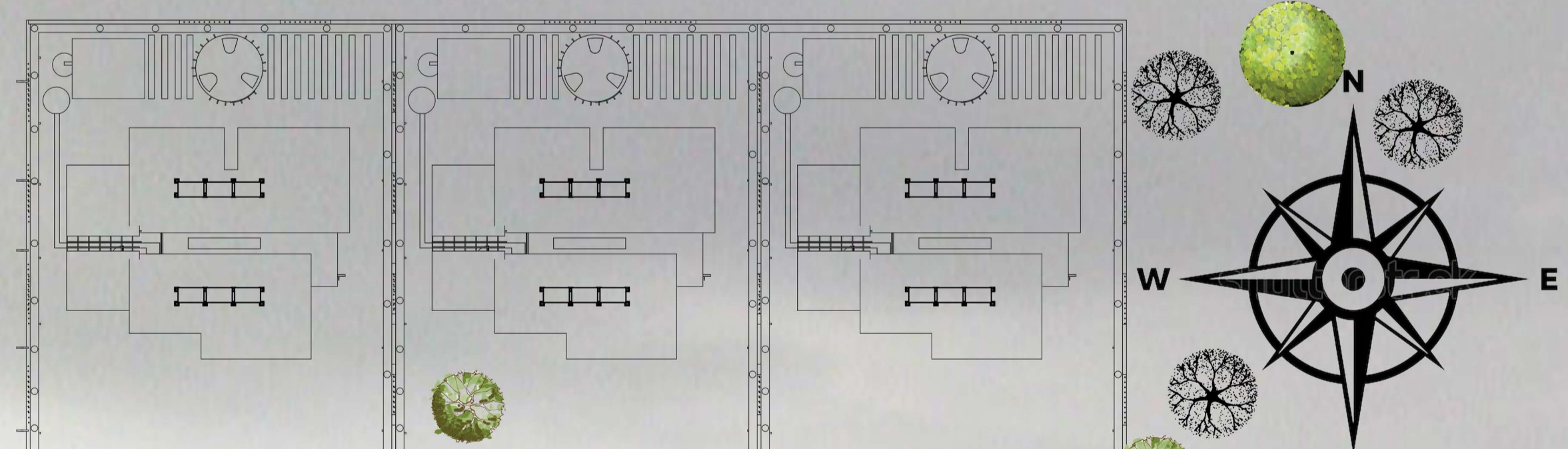
Inspired by the local malawian hut, demarcated into three, with enough space for social distancing whilst sharing memorable family time.

A water way that leads to a well to collect overflowing water from reserve tanks.



## NATURAL VENTILATION/LIGHTING

Stack ventilation cools the interior spaces, large openings in form of louvres and glass windows. Allowing enough natural air flow to remove contaminated air from the interior spaces



front of house to the north, and backyard to the southern part

Eastern winds blowing on site to cool homes

