

REFUGE

THE SHORT STORY

Timothy and Wendy, a four year old couple couldn't wait for the lockdown measures to be eased as they found it more and more uncomfortable and risky to stay in the flats of Bulawayo CBD during lockdown with their three year old Awakhiwe Moyo. They were fortunate to buy a 2 hectare piece of land at Kensington, a plot in the eastern fringe of Bulawayo. Timothy is an accountant and a businessman with an interest in urban farming while Wendy is an architect.



CHOSEN SITE

1148 KENSINGTON
BULAWAYO
ZIMBABWE

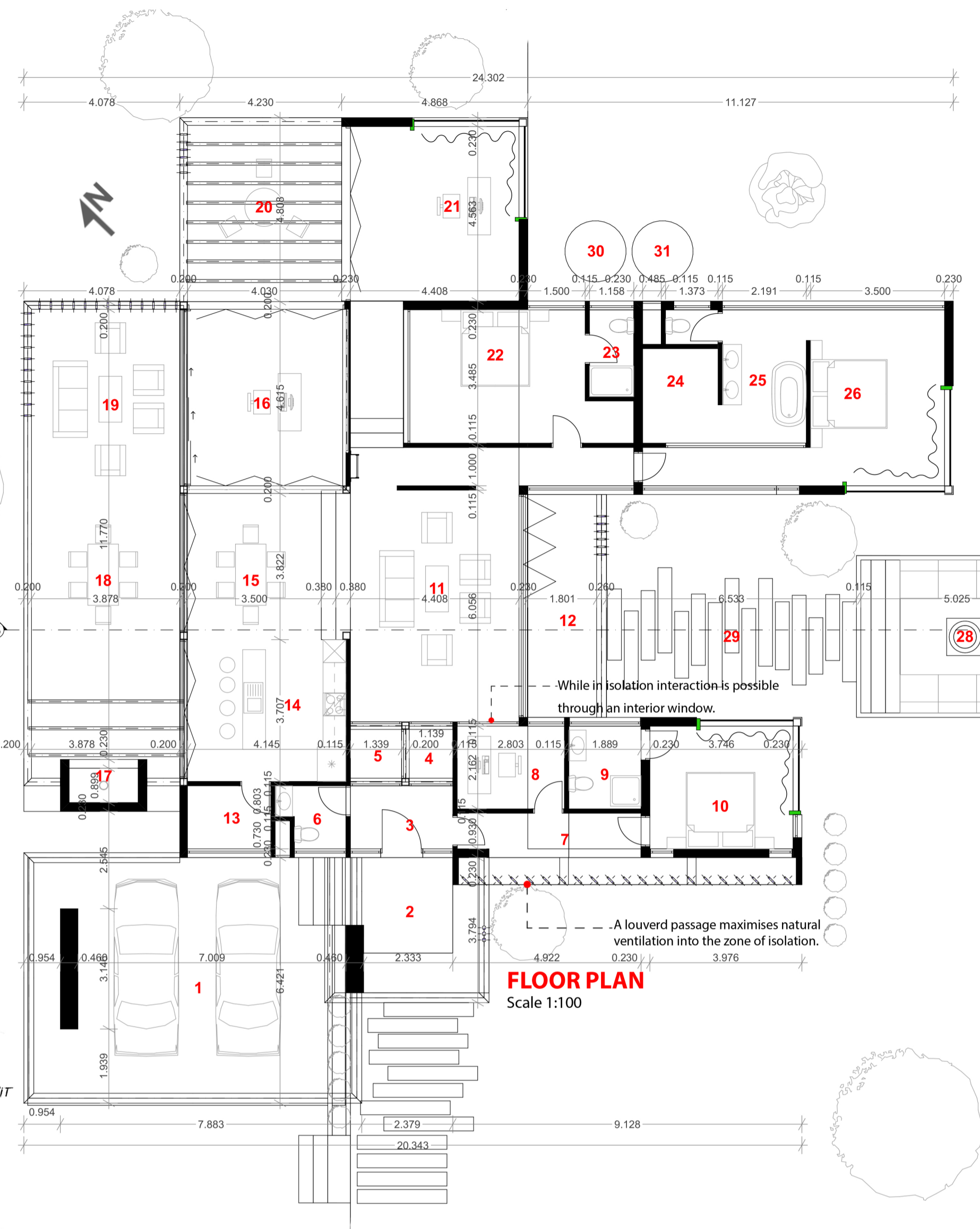
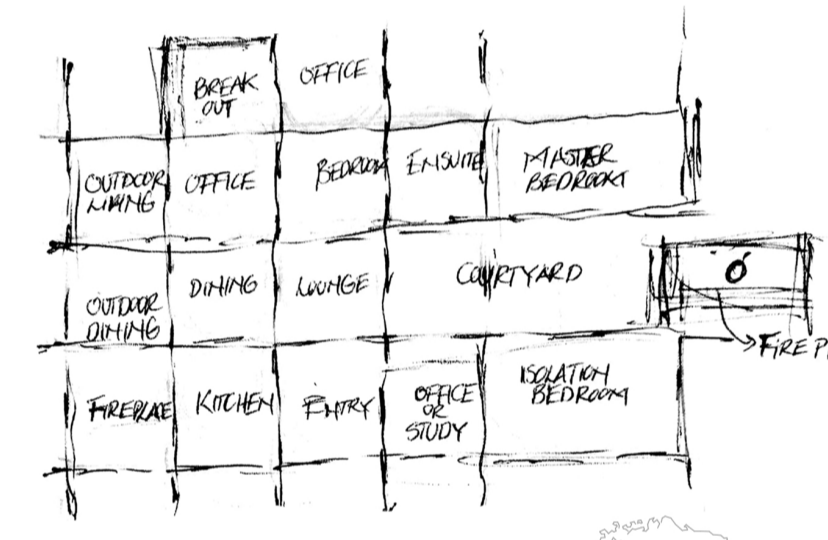
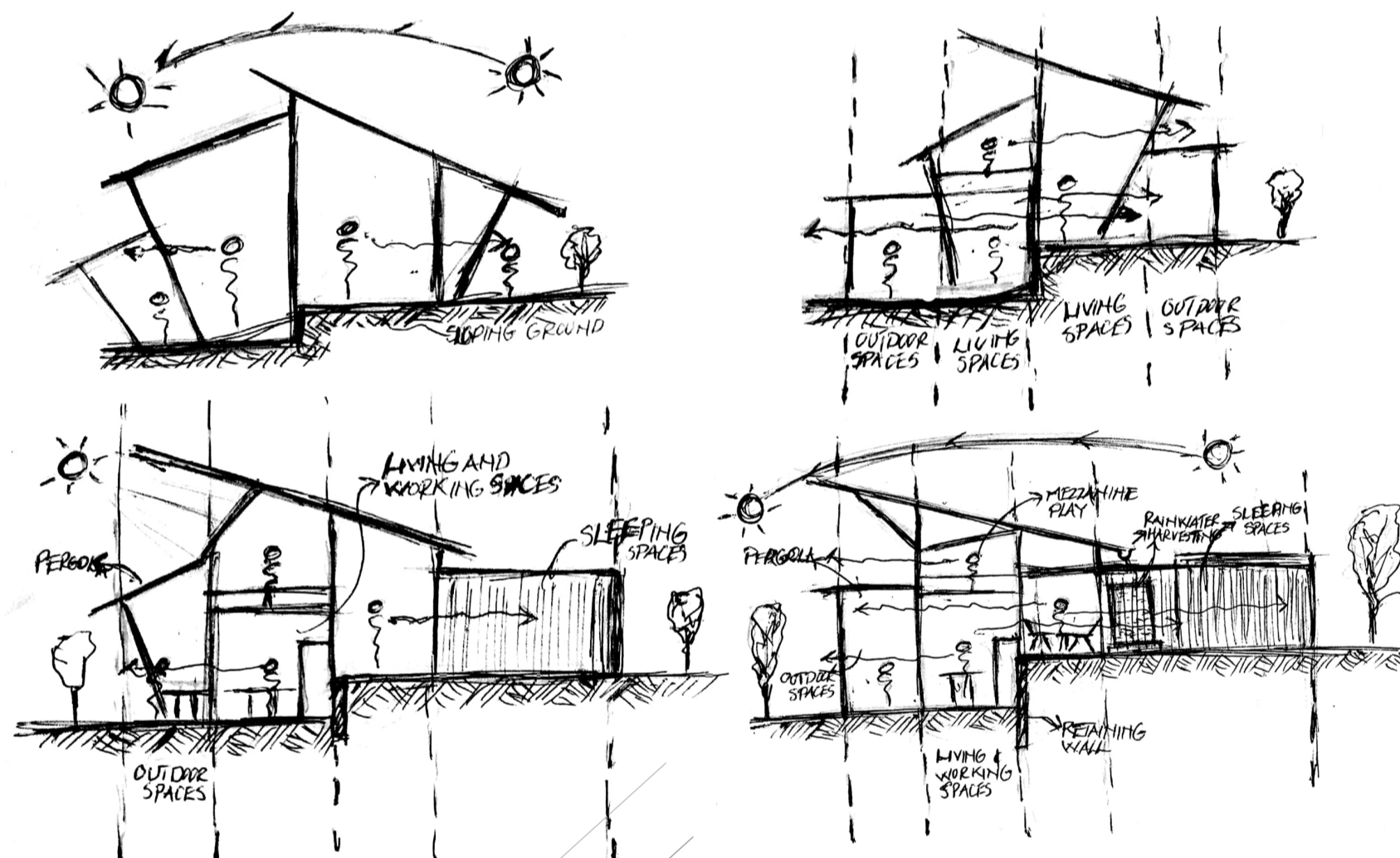
THE PANDEMIC AND ARCHITECTURE

The current health crisis has largely impacted every part of our lives including how we design homes. The environment that surrounds us directly affects the way we feel, it has the potential to attenuate or exacerbate sensations. During the pandemic people have retreated back to their homes for refuge against the spreading virus. It has become a new normal to work or study from home. For this reason a home must be a therapeutic place that helps in healing its habitat, a true reflection of refuge. This can be achieved through biophilic design, a strategy that is also cost effective. Studies show that contact with nature is of paramount importance for health recoveries. Therefore, openings and outdoor spaces such as courtyards are significant elements of design. To survive the pandemic, health experts have also advised on the importance of well ventilated spaces and sanitization. Architecture now needs to become a place of refuge, where the habitat can be protected from potential diseases.

ABOUT THE SITE

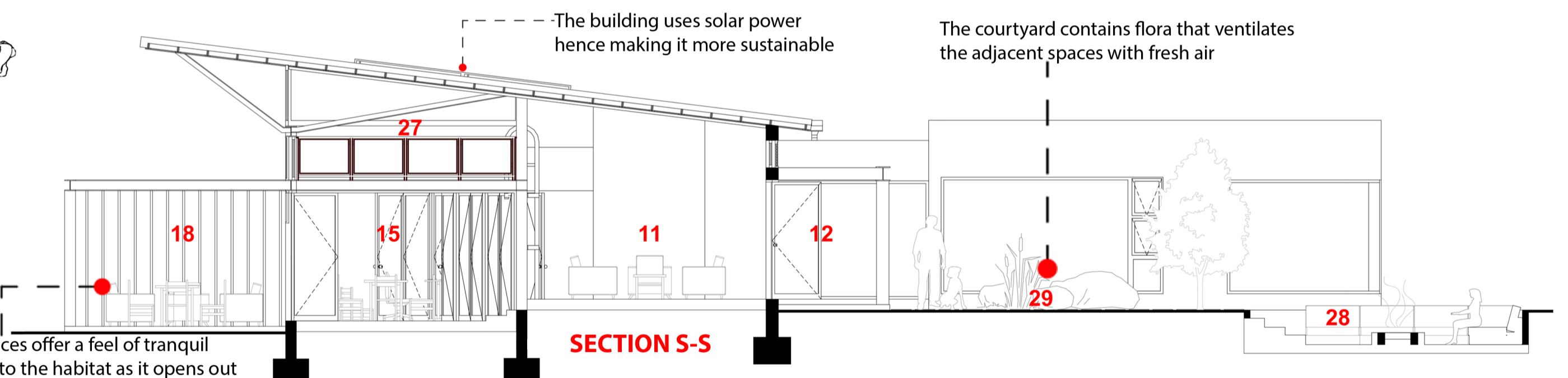
Kensington is located on the urban fringe of the eastern peri-urban area of Bulawayo in Zimbabwe, it therefore falls under Region IV of the five agricultural regions of the country. The site is 100m x 200m. Urban farming (at a small scale) is largely practised in the area to supply food in the inner urban. The site has two adjacent roads on the south-west and north-west side. The position on which I chose to design Timothy and Wendy's home has a slope which I believe creates more exciting design opportunities.

THE DESIGN PROCESS



SPACE	FLOOR FINISH
1. Parking	1. Interlocking Brick Pavers
2. Portico	2. Stone
3. Foyer	3. Vynl
4. Sanitization	4. Vynl
5. Entry Hall	5. Vynl
6. Toilet	6. Vynl
7. Outdoor Indoor Passage	7. Porcelain
8. Office	8. Vynl
9. Ensuite	9. Vynl
10. Guest / Isolation Bedroom	10. Vynl
11. Lounge	11. Vynl
12. Patio	12. Stone
13. Pantry	13. Vynl
14. Kitchen	14. Vynl
15. Dining	15. Vynl
16. Wendy's Studio	16. Vynl
17. Fire Place	17. Vynl
18. Outdoor Dining	18. Stone
19. Outdoor Lounge	19. Stone
20. Outdoor Break-out space	20. Interlocking Brick Pavers
21. Timothy's Office	21. Vynl
22. Awakhiwe's Bedroom	22. Vynl
23. Ensuite	23. Vynl
24. Dresser	24. Vynl
25. Ensuite	25. Vynl
26. Master's Bedroom	26. Vynl
27. Mezzanine Play (Attic)	27. Vynl
28. Firepit	28. Interlocking Brick Pavers
29. Courtyard	
30. Rainwater Harvesting Tank	
31. Wastewater Tank	

FLOOR PLAN
Scale 1:100



SECTION S-S

Out door spaces offer a feel of tranquil and serenity to the habitat as it opens out to the landscape thus creating a healing environment around the house

The building uses solar power hence making it more sustainable

The courtyard contains flora that ventilates the adjacent spaces with fresh air

Mezzanine Play for Awakhiwe and visiting friends is accessed by a fixed ladder.

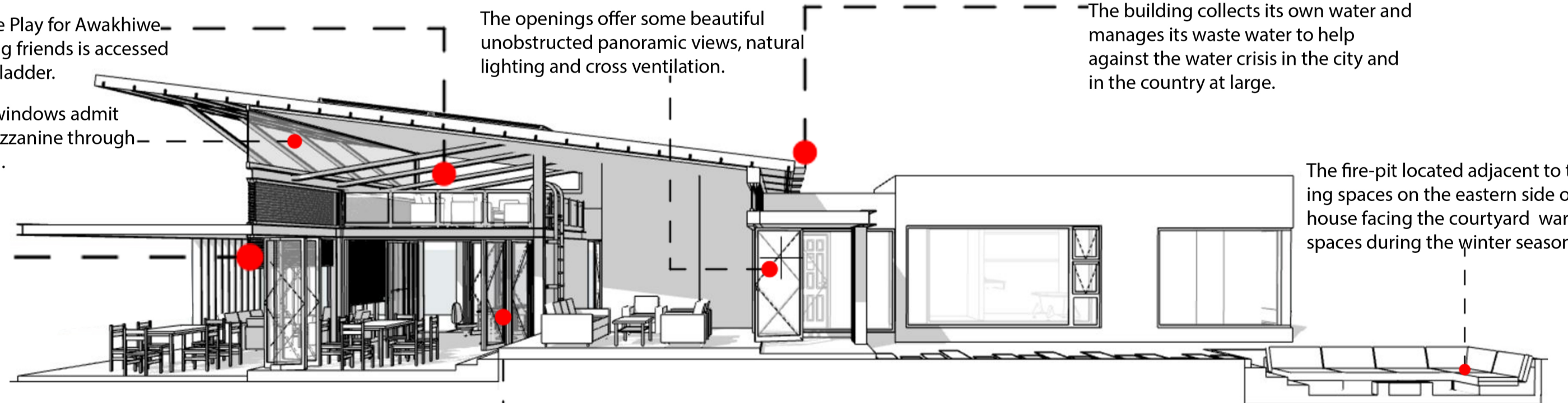
The openings offer some beautiful unobstructed panoramic views, natural lighting and cross ventilation.

The building collects its own water and manages its waste water to help against the water crisis in the city and in the country at large.

The clerestory windows admit light to the mezzanine through the monopitch.

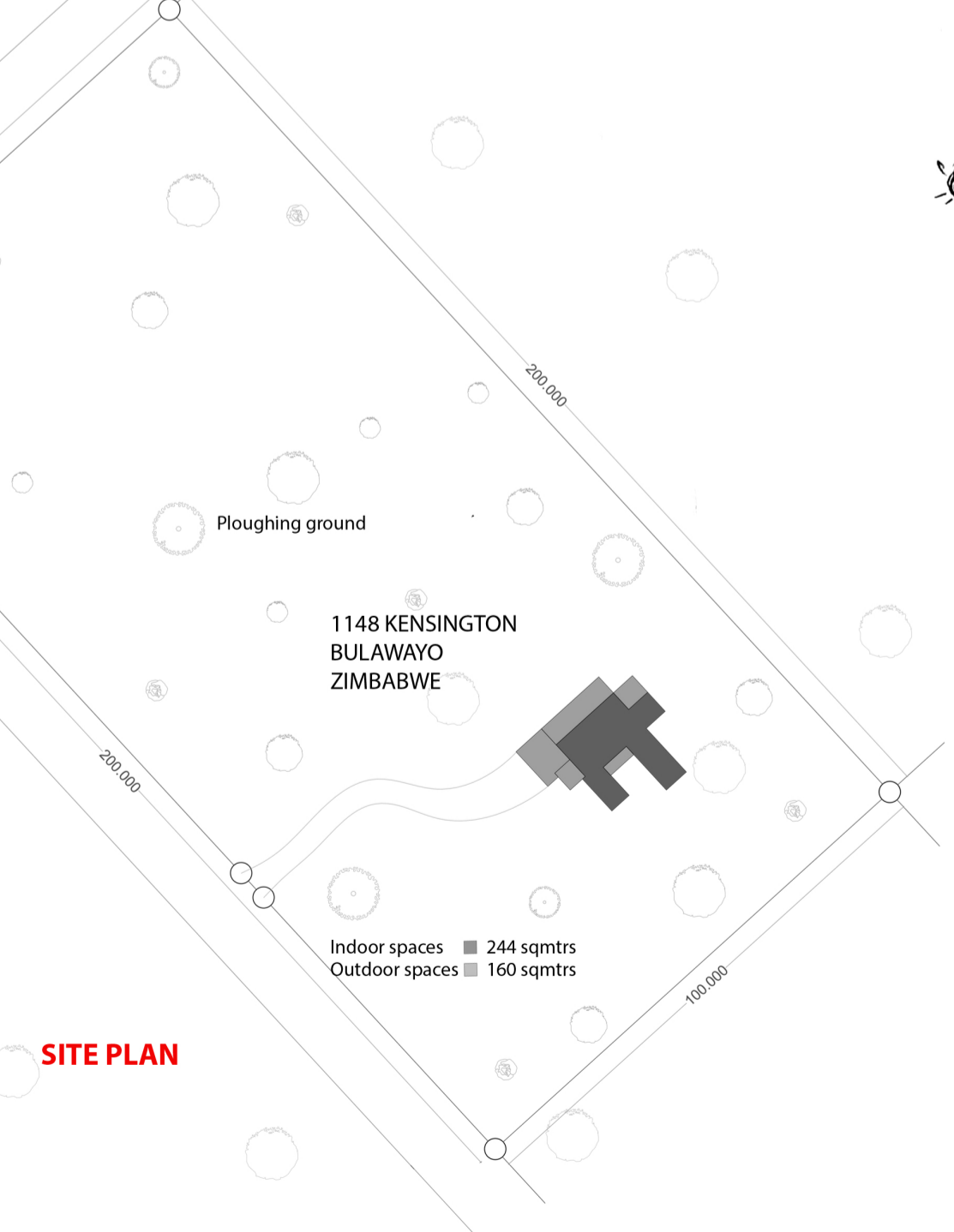
Automated venetian blinds control the natural lighting into the living spaces and offer security. This provides the ability to look out into the prospect (landscape) and at the same time provide refuge.

The fire-pit located adjacent to the sleeping spaces on the eastern side of the house facing the courtyard warms-up the spaces during the winter seasons.



3D-SECTION

The interior living spaces are open which archives transparency and a quick flow of natural light.



SITE PLAN

Indoor spaces ■ 244 sqmtrs
Outdoor spaces ■ 160 sqmtrs